



Sheerwater Muslim Education & Welfare Trust



Sheerwater Muslim Education & Welfare Trust

Overview & Statement



Sheerwater Muslim Education & Welfare Trust

Version: 2.2.
Date: 30.04.2025
Author: Sheerwater Muslim Education & Welfare Trust
Approval: Committee of Sheerwater Muslim Education & Welfare Trust



Sheerwater Muslim Education & Welfare Trust

BLANK PAGE



Background & Overview

Sheerwater Muslim Education and Welfare Trust is a registered charity (Charity Number: 1141256) with the purpose of providing a facility and service for the local and wider community to complete their religious obligations whilst learning and developing their understanding of their faith. The Charity was created on 8th April 2011 and subsequently secured a premises through collaboration with the local authority, Woking Borough Council. The Charity is currently located in Sheerwater, a local borough within Woking, a town south-west of London, within the parade of commercial units currently serving the community, providing a central location for its congregation and attendees. The Charity was created through collaboration and commitment from the committee members with the sole focus of the betterment and development of the local population.

Sheerwater Muslim Education and Welfare Trusts operates 7 days a week and is open to its congregation throughout all prayer times, typically from sun rise to evening. The Charity has a dedicated Imam, who is a full-time employee of the Charity and leads all mandatory prayers whilst delivering other duties e.g. classes and sermons.

The Charity's facility currently has a maximum capacity of circa 150 attendees, which includes usage of the rear of the property to accommodate additional attendees during peak times. It is in full use throughout the year, providing an open door policy to attendees, from all faith backgrounds and races.

Sheerwater Muslim Education and Welfare Trust delivers regular engagement sessions with the wider community covering many topics including mental health, dealing with trauma, overcoming challenges, youth engagement and funeral services including providing a location for prayers post bereavement. In addition to this, the Charity is focussed on 'Dawah', a movement involved in calling people towards the oneness of God and encouraging the avoidance of immoral vices which do not contribute positively to wider society.

Overall, the Charity has grown significantly over the last 15 years and counting with attendees increasing, participation in events growing and further involvement from the immediate and wider community becoming prevalent. The Charity aims to continue its role in the community through providing services and contributing to the local demographic through offering a safe space to socialise, grow spiritually and develop enlightenment through awareness of duties of faith.



Mission Statement

Sheerwater Muslim Education and Welfare Trust has the following Mission Statement:

Sheerwater Muslim Education and Welfare Trusts mission is to provide a service and platform for spiritual development through understanding faith, increasing community engagement, enjoining good and forbidding evil. The Charity's main aim is to serve the local and wider community through encouragement of positive actions and the dissuading of immoral activities

Sheerwater Muslim Education and Welfare Trust will aim to achieve this mission through the following methods:

Engagement: Proactively engaging with the local and wider community through discussion, visitation, operating an open door policy to its premises, invitations and sermons to encourage collaboration and allow participation which creates a positive energy and experience for everyone

Development & Growth: Continuous investment in the people, processes, technology and capabilities that exist within the Charity to create an optimised service that is efficient, eco-friendly, beneficial and pertinent to the needs and challenges being faced by the local community and society as a whole

Collaboration: Through close collaboration with other faith groups across the community, local political leadership, organisations and community activists, Sheerwater Muslim Education and Welfare Trust will ensure it is not working in a silo but is aligned and working collectively with local initiatives to support societal development.

The benefits that can be realised through the achievement of the Mission Statement of the Sheerwater Muslim Education and Welfare Trust are numerous but namely:

Wellbeing: Supporting the social and spiritual wellbeing of the local community through providing a centre for communication, discussion, conversation and personal growth

Youth Engagement: Providing a safe space for the local youth and younger population to keep them away from potential dangers or being subject to illegal activities i.e. drugs, gangs, antisocial behaviour

Community Development: Develop community activity and integration through interfaith events, open days and forums, fun days and teaching and learning



Purpose

The purpose of the Sheerwater Muslim Education and Welfare Trust is the following

Provide a place of worship for the Community

Currently, the areas of Sheerwater, West Byfleet, Byfleet, Woodham and beyond do not have a convenient location for the members of the Islamic faith to pray. With an ageing population finding it difficult to reach the centrally located Shah Jahan Mosque, which is a challenging commute and a difficult journey without vehicular transportation and an infrequent public transport system, the Sheerwater Muslim Education and Welfare Trust plays a pivotal role in providing a secure location for worshippers to fulfil their daily prayers, in a convenient and accessible environment

Enhance and Develop Community Relations

Being centrally located within the commercial area of Sheerwater, the Sheerwater Muslim Education and Welfare Trust plays an active role in the community, opening its doors since 2016 to members of all faiths and backgrounds. It has held multiple events inviting non faith participants enabling non faith members involvement and participation whilst also participating in local area promotion events. The Sheerwater Muslim and Education and Welfare trust aims to continue to develop its relationships within the area and further build on the good work that has recently been completed to foster engagement and support to create alignment and synergies. Events, public openings and forums encourage interaction and a sharing of ideas which increases community spirit and unity which is a critical aim of the Charity

Youth Engagement

The Sheerwater Muslim Education and Welfare Trust actively interacts and engages with the younger generations within the community. The youth are considered a critical part of the community therefore much investment in intellectual thought and interactivity is given. The youth today will be leaders tomorrow, so the Sheerwater Muslim Education and Welfare Trusts considers them as vital within their strategy for growth and development. Much time is devoted to speeches and lessons encouraging the youth to veer from temptations and evil and become righteous

Spiritual Outreach



Sheerwater Muslim Education & Welfare Trust

Through the scholarly knowledge obtained and understood amongst the leadership, Imam and leading members of the congregation, a key facet of the Islamic faith is to learn, practice and preach teachings. Therefore, in the spirit of propagation, the Sheerwater Muslim Education and Welfare Trust aims to expand the teaching of the Islamic faith throughout the community and wider through regular outreach engagement activity including visitations to local members of the community and public addresses. This enables existing members of the faith to enhance their understanding whilst also introducing the faith to members of the community less familiar with the principles of the religion



Vision

The vision of the Sheerwater Muslim Education and Welfare Trust is clear and can be summarised via the following;

The Sheerwater Muslim Education and Welfare Trust aims to become a source of community enlightenment through the propagation and teachings of the Islamic faith whilst enabling community cohesion, inclusivity, unity and success through encouraging morality and neighbourly love. The vision for the Charity is to become a first class facility that address all of the communities needs including births, deaths, marriages, prayers, support, education, socialisation and welfare. The Charity aims to embrace technology whilst providing consideration for the environment and its surroundings. Furthermore, the vision for the Charity includes leaving a lasting legacy of community cohesion, togetherness and solidarity, for people from all faiths, ethnicities and backgrounds.



Advantages and Benefits

The following are a list of key reasons as to why the Sheerwater Muslim Education and Welfare Trust is needed, in particular within the Sheerwater/Woking area;

Economic development:

- Creating opportunities for small / start up enterprises through offering low risk commercial space for networking, socialisation of ideas, engagement and advertising
- Creating volunteering, entrepreneurship and employability training opportunities through the facility for young people in particular including administration, religious roles, events coordination
- Creating a self-sustaining community owned social enterprise

Regeneration:

- Supporting local businesses which bring value to the community and facility service users and creating a circular economy
- Bringing a vacant building back into use and increasing footfall on the commercial street
- Revitalising empty shop fronts thereby improving the look of the town
- Increasing people's access to a range of services (religious worship, learning opportunities, socialising, fitness, retail)
- Creating connections within the community to empower people to have more control over what happens in Sheerwater

Public Health:

- Providing food security through a foodbank for people and families living in poverty
- Providing alcohol free social events for people who would like to abstain from intoxicants
- The health of local residents by providing a space for physical activity and developing a programme of outreach exercise (walking groups)

Social Wellbeing:

- Creating a space which promotes integration, where people from all backgrounds can come together and feel a sense of belonging and connection



- Reducing isolation in older people by providing an accessible venue and delivering a programme of support for the elderly
- Supporting young people to learn and volunteer together through dynamic and accessible/engaging activity programmes

Environmental wellbeing:

- Improving the energy efficiency of a dated building

Services

The Sheerwater Muslim Education and Welfare Trust currently delivers a number of services to the local community and congregation. These range from regular, daily scheduled activities to on demand events which are tailored against requirements. With further investment, the scope, scale and frequency of these events can be increased to serve the local community.

Breakdown of Services:

Service	Outline of Services	
Prayers	Overview	Prayers are offered daily at pre prescribed times aligned to the Islamic calendar and are delivered by the full time, dedicated Imam. Doors are open well in advance of prayers times so accessibility to the premises are provided throughout the day
	Frequency	Daily
	Participants	100 (accumulated)
	Value	The 5 daily prayers provide an opportunity for a fulfilment of an religious obligation, spiritual growth as well as an opportunity to act as a touch point for all attendees throughout the day
Jumma Prayers	Overview	Weekly Midday prayer delivered alongside a Sermon with high criticality due to religious significance
	Frequency	Weekly
	Participants	250+



	Value	Weekly focal congregation for the local community plus local business owners, workers and students
Eid Prayers	Overview	Annual prayers occurring twice per year post Ramadhan & Hajj
	Frequency	Twice per year
	Participants	350+
	Value	Significant annual prayer marking a celebratory moment in the Islamic calendar
Islamic School	Overview	Daily religious school for children aged between 5-15 covering the core tenants of Islam including rulings, prayers and Quranic recitation
	Frequency	Monday-Thursday
	Participants	40 (boys and girls)
	Value	Critical to the development of youth in their understanding of the Islamic faith and execution of actions
Women's Classes	Overview	Weekly Women's circle providing an overview of core religious texts including historical anecdotes
	Frequency	Weekly
	Participants	5-10
	Value	Critical inclusivity function allowing for the development of Women's faith and providing a platform for socialisation within context
Funeral Services	Overview	Funeral prayer services can be provided including a centre for post death prayers and gatherings for family members
	Frequency	As required



	Participants	Capacity for 200 attendees
	Value	High value service providing sanctuary, comfort and reflective support in a spiritual setting for the deceased family members
Wedding Services	Overview	Formal religious marriage service under the jurisdiction and execution of a qualified Islamic Imam
	Frequency	Ad hoc
	Participants	Capacity for 200+ attendees
	Value	Important service to provide a platform for marriage and completion of religious duties in the nuptial ceremony among necessary witnesses
Ramadhan Meals	Overview	Daily meal service over the course of the holy month of Ramadhan
	Frequency	29-30 days
	Participants	30-50 attendees daily
	Value	Critical service to provide a meal and refreshments during a Holy month and a communal service allowing all members of the public to partake in a social and religious gathering
Outreach Visits	Overview	Community outreach visits with the purpose of engaging with community members, encouraging religiosity and checking on welfare
	Frequency	Weekly
	Participants	5-8
	Value	Critical support and community relations activity designed to enable care, foster wellbeing and develop awareness of faith



Congregational Details

The congregation consists of the immediate, local community and wider attendees from as far as London and beyond. Ages of attendees vary and range between senior citizens, above pension age to infants that attend prayers and other activities with their parents and guardians. The Charity also serves members of the community from ethnic minority groups including;

- English
- Pakistani
- Indian
- Bangladeshi
- Syrian
- Afghani
- Libyan
- Mauritius
- Malaysian
- Nigerian

The spoken language within the Sheerwater Muslim and Education Welfare Trust is typically English however there are many members of the congregation that are multilingual including being able to recite, speak and converse in Arabic and Urdu, Pashto as well as Bengali and other languages. This enables the Charity to deliver Sermons, Programmes, notifications, welfare and educational services to a wide range of participants.



Operations

Employees

The following is a breakdown of the Sheerwater Muslim Education and Welfare Trust employees and volunteers and their roles:

Role	Type	Duties
Imam	Full-time	Leading all prayers, headteacher of the Islamic school, subject matter expert on all religious aspects
Caretaker	Volunteer	Cleaning of all facility areas, maintenance of equipment, stock replenishment and event readiness
Administrator	Volunteer	Completion of administrative paperwork surrounding the Charity including tax submissions, facility organisation and tenancy management
Muezzin	Volunteer	Executing all call to prayers daily and for significant annual prayers
Events Organiser	Volunteer	Coordination of all events including booking, scheduling, planning, communications and event management
Catering	Volunteer	Ordering food and drink, anticipating dietary requirements, cutlery management, managing suppliers and management of events
Site Management	Volunteer	Coordinating people, management of equipment, spacing, direction and providing instructional support



Financial Overview

The Sheerwater Muslim Education and Welfare Trust is an independent Charity that relies on the donations of the public in order to facilitate its upkeep and operations. It also depends on these donations to pay for its full time employment of the Imam.

The below is a breakdown of the financial components of the Charity over a period of a typical year (£);

	Average Month
Income	
Property	2000
Donations	2000
Contributions	150
Grants	0
Loans	0
Costs	
Rent	500
Maintenance	150
Employees	1500
Utilities	400
Food	150
Net Income	
Total	1450

The figures provided in the above balance sheet are indicative of a typical month's activity within the Charity. These figure will vary regarding income in particular with regards to contributions made through donations as this is subject to the congregation and the amount of money that is offered, which is typically increased during larger congregational prayers i.e. Eid or Friday Prayers.

Costs will also vary as the requirements for the maintenance and upkeep of the facility are impacted by the condition of the property. For example, there have been numerous instances where a change



Sheerwater Muslim Education & Welfare Trust

in carpet has been required due to flooding or leaking which is outside of the control of the charity. There have also been requirements modernisation and refurbishment of certain areas i.e. the kitchen or bathroom areas to accommodate the public/congregation. These larger costs are not reflected in the typical monthly breakdown but can be considered as occasional larger costs.



Future Requirements

In order to continue the success of the Charity and enable the continued growth and scalability of services, the Sheerwater Muslim Education and Welfare Trust requires a permanent location. The current area the Charity is located in, Sheerwater, has undergone a substantial redevelopment and regeneration programme. This has completely transformed the outlook of the area, with many traditional terraced, semi-detached and detached homes having now been demolished and replaced with studio, 1, 2 and 3 bedroom apartments alongside larger homes which have been developed in line with the new properties.

Although this investment has been overall a positive experience, with the local area now benefitting from a state of the art leisure centre inc. swimming pool and gym, as well as a large retail outlet currently operational, this has resulted in the premises where the Charity is based coming under scrutiny with the current contract due to being terminated at the end of the calendar year - 2025.

The termination of the leasing contract has left Sheerwater Muslim Education and Welfare Trust with the need to find a replacement premises to continue to fulfil its obligations and services to the public and to members of its faith group.

A future building must enable the following key components to continue to allow the Charity to perform:

- A large praying area that can accommodate over 100+ attendees at any given time
- Bathroom facilities that can allow attendees to complete their ablution requirements prior to prayers commencing
- Car parking facility for attendees unable to travel by foot to the premises
- Kitchen area for events and hosting the general public during Ramadhan
- Alternative hall for female attendees to allow for separation and segregation amongst attendees or for any spill over



Sheerwater Muslim Education & Welfare Trust

- Lodging or a separate room to allow the Imam to be on premises 24/7

This list is non-exhaustive and can be flexible but demonstrates the core requirements needed from the facility to enable its success. The Sheerwater Muslim Education and Welfare Trust is open to working with any developers that can provide leasing options or is equally open to purchasing a property either within the Sheerwater area or somewhere that is within proximity to the area.

Any discussions related to the acquisition of a commercial property should be directed towards the committee members listed in this statement.



Proposed Acquisition Plans

In March 2025, the Sheerwater Muslim Education and Welfare Trust took the bold decision to acquire a freehold property within the Sheerwater area for the sum of £1.7m. This is with an initial deposit of £100,000 and they have been provided with a period of 6 months to complete the remaining payments.

The premises are arranged to provide a glazed vehicle showroom of brick construction beneath a pitched and tiled roof. The Showroom with direct frontage to Albert Drive and extends to some 2,300 sq ft in addition to ancillary Offices, WC and Kitchen facilities. Adjacent to and located directly behind the Showroom is a large vehicle Servicing area which is split in to 2 x distinct sections, a 3-x bay service centre and a 2-x bay MOT service bay. The Showroom areas are reasonably well appointed with tiled floors, suspended ceilings, recessed lighting and Air Conditioning and capacity for some 6/8 cars whilst the Workshop and MOT bays provide capacity for 7 x vehicles at any one time. To the outside there is capacity to display circa 40 + x vehicles. The showroom is within close proximity to the current building that is used by the Sheerwater Muslim Education and Welfare Trust and therefore accessible but the current congregation.

Proposal Property Details

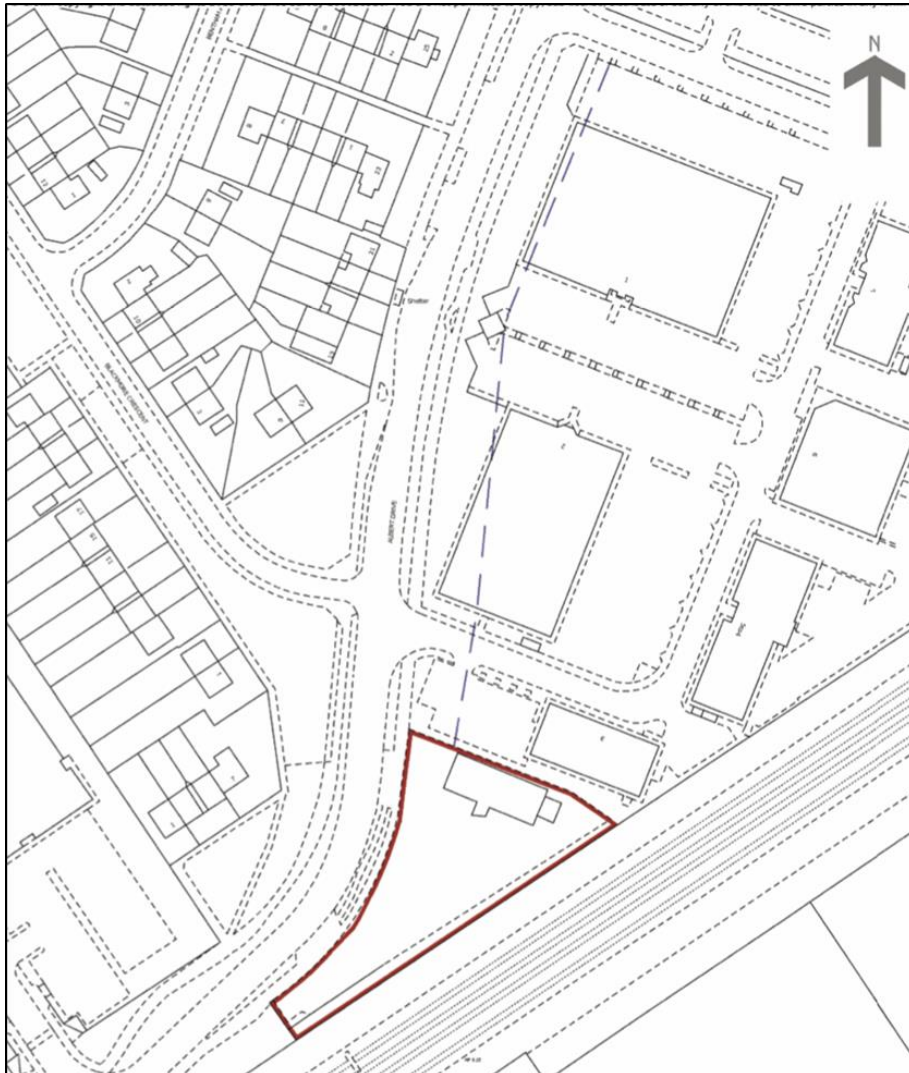
The Property that is to be purchased is located at the following address;

- Albert House, Albert Drive, Sheerwater, Woking, Surrey, GU21 5JZ





A HM Land Registry view of the proposed property is outlined here showcasing the scale:



The distance between the current location, 34 Dartmouth Avenue, Sheerwater and Albert House, Albert Drive is approximately 0.6miles – equating to a 3 minute car journey and 13 minute pedestrian journey.



Sheerwater Muslim Education & Welfare Trust

The distance between the proposed location from the nearest train stations are 1.5miles to Woking Train Station – equating to a 6 minute car journey and a 30 minute pedestrian journey and 2.1miles to West Byfleet Train Station – equating to an 8 minute car journey and 42 minute pedestrian journey.

The location is well served by multiple bus routes including the 436 and 456 buses that leave regularly from Woking Town Centre.

The location also has a bike route which allows easy access for cyclists in a safe and environmentally friendly manner.

The following key images provide an indication of the opportunity available;

Image 1. Showroom, Garages & Car Park (North Facing)



Image 2. Showroom, Garages & Car Park (South Facing)





Sheerwater Muslim Education & Welfare Trust

Image 3. Ground and Upper Level Car Park





Sheerwater Muslim Education & Welfare Trust

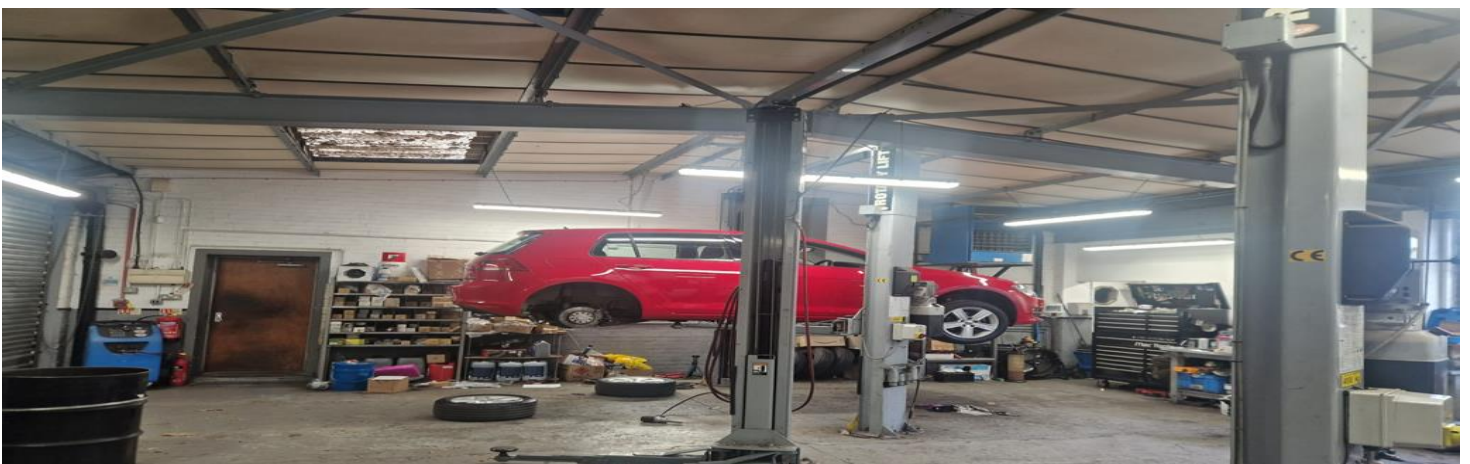
Image 4. Internal Showroom



Image 5. Carpark Upper Level



Image 6. Internal Garages





Reasons for purchase

The primary driver for a proposed purchase of the stated property is due to a request from Woking Borough Council to vacate the current location, which will become open to sale for private development, in keeping with the wider regeneration work currently being undertaken within Sheerwater. In addition to the request to leave, the main reasons for selecting this property as an ideal investment opportunity are as follows;

- **Location;** The positioning of the proposed property is ideally located close enough to the existing premises and is accessible from both the town centre and train station. The existing congregation can continue to benefit from the facilities whilst also providing the opportunity for future members to attend.
- **Size;** The size of the property, at approximately half an acre, is significantly larger than the current premises used by the Sheerwater Muslim Education and Welfare Trust. This is critical as the current premises can no longer sustain and provide for the level of attendees in particular for larger congregational prayers e.g. Friday or Annual EID prayers. A property that can host and safely provide for over 500+ attendees is crucial and the proposed property comfortably allows that.
- (All areas are approx.):
 - Ground floor Showroom: 213.31
 - Ground floor workshop: 108.15
 - Ground floor workshop: 146.64
 - First floor office: 25.95
 - Ground floor kitchen 1.66
 - First floor internal storage: 2.31
 - Total: 498.02 (5,360 sq ft) approx.
 - External: Vehicle display for circa 40/50 vehicles.
 - Site area: 0.228 of a hectare (0.565 of an acre approx.)



- **Scalability;** The proposed property can be expanded given the floor layout and its current usage. In its current state, there is a large showroom, which dominates the layout. This will be used as the primary prayer facility. Adjacent to this, are multiple other sections which allow for expansion and for services to be delivered within them should they be required. This includes women's sections, function halls, Islamic schools etc.
- **Premises;** Continuing on the theme of a scalable solution, the floorplan and current make-up of the proposed property is such that it allows a clear division of functions. Currently the property has;
 - A large show room
 - Multiple toilet facilities
 - Office space
 - 5 distinct garages
 - An upstairs multipurpose room
 - Stock room
 - 40+ off street car parking spaces
 - Floor to ceiling glass panelling

This enables the Sheerwater Muslim Education and Welfare Trust to either separate or combine activities as required. Rooms can be integrated or separated for both communal and individual services. The versatility and adaptability of the space is beneficial for future proofing and growth.

- **Car Parking:** With a large number of attendees arriving by car, the current premises with its on street parking and highly residential location, cannot cope during peak times with car volume. The new location provides ample space for pedestrian, cycling, or car driving attendees. With a split level car park, there is adequate space for a large volume of cars without hindering the public.
- **Accessibility:** The proposed property provides disability access with a ramp and easy access for elderly people with no staircase to enter and a low incline to the front door. Internally,



there is significant space for all types of attendees, with both mobility issues and disability challenges.

- **Privacy:** The property offers seclusion and privacy for attendees, to be away from the public and to offer their prayers without invasiveness from others. This is particularly useful for when women will attend the premises, ensuring they can pray and complete their duties in the knowledge that there will be no exposure, providing peace of mind.



Funding for Purchase

The Sheerwater Muslim Education and Welfare Trusts understands the large investment that is required to acquire the property and take complete ownership of the freehold of the premises.

To support and enable this, the Charity will leverage its existing equity and recall loans issued to support Islamic and Charitable causes, that it has supported since its existence, equating to approximately £170k. The main asset that is to be leveraged is a property that is owned by the Charity. This is a freehold, multi bedroom property within the Woking area that generates rental income monthly. This can be either sold to generate funds or retained and income used to support the purchase. This currently value of this property is circa £275k.

In addition to using its current investments and income sources, the Charity has devised the following strategy to generate and complete the funding for the purchase. This is variable and unpredictable however allows for a wide scope of opportunities to engage with the public and identify streams of funding;

- **Community Donations**

- Jumu'ah & Taraweeh Collections: Weekly and special event collections from congregants.
- Local Business Contributions: Partnering with Muslim-owned businesses for regular donations.
- Family Sponsorships: Encouraging families to contribute as a sadaqah jariyah (ongoing charity).

- **Large Donor & Waqf Contributions**

- Key Donors & Philanthropists: Outreach to high-net-worth individuals for lump-sum donations.
- Endowment (Waqf): Creating a waqf model where donors contribute towards a long-term funding source.
- Naming Opportunities: Offering recognition (e.g., prayer halls, classrooms) for significant contributions.

- **Online Crowdfunding & Global Support**



- GoFundMe & LaunchGood Campaigns: Reaching international donors via fundraising platforms.
- Social Media Campaigns: Engaging influencers and scholars to promote donation drives.
- Website & Direct Bank Transfers: Creating a dedicated site for global contributions.
- **Fundraising Events**
 - Charity Dinners & Auctions: Hosting events where businesses and individuals pledge donations.
 - Islamic Lecture Nights: Inviting renowned scholars for fundraising talks.
 - Community Challenges: Sponsored events like charity runs, bake sales, and competitions.
- **Corporate & Government Grants**
 - Islamic Charities & Trusts: Applying for grants from Muslim organizations and foundations.
 - Local Council & Government Support: Seeking funding for community-building initiatives.

Indicative Implementation Plan

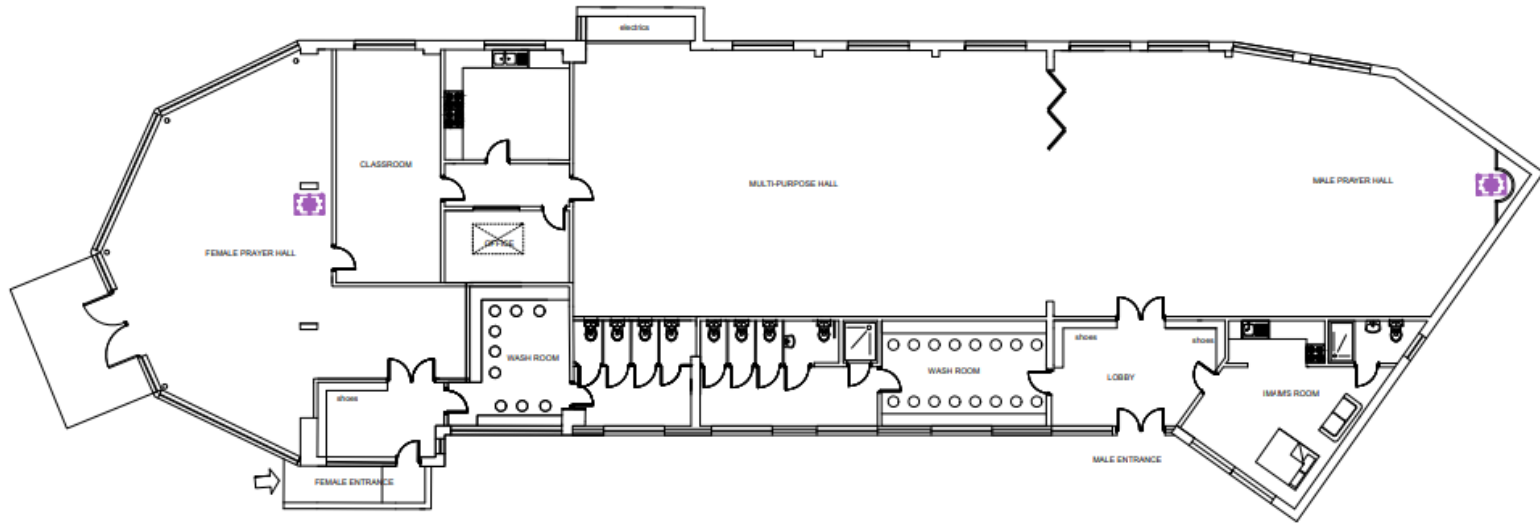
- Year 1: Raise 60% (£1m) through community, key donors, and crowdfunding.
- Year 2: Secure the remaining 40% (£700k) through events, sponsorships, and grants.

Floorplans

A formal engagement process with an approved property architect has begun with the principle of forward planning and preparation for completion. This is in consultation with the committee members to aim to understand how best to utilise the space offered by the premises and deliver the services that are required from a mosque as well as the charitable and educational requirements. The following is a draft proposal of a floorplan demonstrating completeness and functionality from the proposed property;



Sheerwater Muslim Education & Welfare Trust



PROPOSED GROUND FLOOR PLAN



The key features that can be seen from the above floorplan are the following;

- Large and expansive main prayer hall, comfortably allowing for a large congregation to pray without compromising the quality experience or safety of individuals
- Large washroom facility for users to complete their necessary pre-prayer ablution activities
- An adequate kitchen facility to allow for activities requiring catering, food and beverage to be supported within the facility
- A separate quarters for the Imam for on-site dwelling and completion of 1:1 services
- A separate entrance and prayer facility for women to ensure an inclusive but modest environment is supported
- Adequate space for a Madrassa (Islamic school) for children and adults of all abilities to complete their basic Islamic and Quranic education

Additional Services

As the Sheerwater Muslim Education and Welfare Trust expands, it will allow for an increase in the services it provides. In addition to the core services mentioned earlier that are currently in operation, the following additional capabilities will be introduced, further highlighting both the need and benefits of a move to a larger premises;

- **Expansion of Initiatives for Women;** Unfortunately the current premises does not allow for the catering for female attendees either for prayers, large events, or any other in person services. This is due to a limit on size. With the acquisition of the proposed property, there can be services introduced for women to attend inc;
 - Quran classes
 - Hadith classes
 - General Islamic education events



- Iftars
 - Counselling
 - Skills workshops
 - Revert education services
-
- **Larger Madrassa:** Currently, the Madrassa run by the Charity is limited in capacity of children it can cater for. A larger space will enable more children to attend and benefit from the learning and teachings available
 - **Events;** The charity can expand and grow its event offerings to accommodate larger audiences and deliver higher quality outputs
 - **Clinics;** Services can be expanded to include clinics including mental health, physical wellbeing clinics, advice, counselling, guidance to the community and congregation
 - **Charity & Zakat Distribution;** Helping the needy with food, clothing, and financial aid routinely and in times of needs
 - **Youth Programs;** Camps, sports, and mentorship activities during holiday periods providing a positive outlet for young community members
 - **Library & Bookstore;** Providing Islamic books and resources for awareness, education and personal development
 - **Event & Meeting Space;** Hosting community events and discussions for all purposes and initiatives
 - **Crisis Assistance;** Support for refugees, domestic violence victims, and those in need both ad hoc and regularly

Overall, the quality, volume and scope of offerings the new premises will allow Sheerwater Muslim Education and Welfare Trust will significant grow as a result of this purchase. The outreach capability



Sheerwater Muslim Education & Welfare Trust

will expand to ensure the community is well catered for, in all parts of its spirituality and civil aspects, further highlighting the criticality of the purchase.



Sheerwater Muslim Education & Welfare Trust

Appendix

Key Details:

Address: Sheerwater Muslim Education and Welfare Trust is currently located in Sheerwater, Woking.

The full address of the Charity is: **31 - 33 Dartmouth Ave, Woking, Surrey, GU21 5PE**

The nearest train stations include:

- West Byfleet Station: 1.3 Miles
- Woking Station: 1.7 Miles
- Byfleet and New Haw Station: 3.2 Miles

The nearest Motorways include:

- M25
- A3



Sheerwater Muslim Education & Welfare Trust

Committee Members:



Mr Deran Shah

Chairman: Providing leadership, governance, financial oversight, religious guidance and perspective and direction for strategy for operations, whilst leveraging extensive network and history for development and best practice

07782411127



Mr Karam Dad

Trustee & Committee Member: Delivering religious ceremonies in the absence of the Imam, providing oversight and input of decision making, supporting engagement and delivering council.

07772233115



Mr Saadat Ahmed

Trustee & Committee Member: Providing external engagement, supporting decision making process, coordinating events and activities, ensuring operational functionality, managing stock and inventory and providing expertise in theology

07980004780



Mr Ahmed Shah

Trustee & Committee Member: Delivering operations, managing activities, organising events, ownership of administration, leading youth engagement, and supporting local council engagement

07846156789



Mr Akbar Jaan

Trustee & Committee Member; Supporting the decision making process through knowledge leveraging network and supporting governance processes.

07886005746



Sheerwater Muslim Education & Welfare Trust

END